

# The Spire: December 2024

## *Welcome to a New Year*

Dear Friends in Christ,

It may seem strange for my first newsletter message to be one celebrating a New Year, but that's just what we will be doing in the coming days. Unlike the Gregorian calendar that guides most of our days, the Church year begins with the First Sunday of Advent which, this year, is December 1<sup>st</sup>. I've long appreciated this "jump start" on the much of the world's celebrations, as Advent does not bear the weight of January 1<sup>st</sup>.

While many will look to January 1<sup>st</sup> to establish New Year's resolutions, the Church calendar invites us to begin such considerations a full month beforehand. As we welcome Lectionary Year C, we may wish to begin contemplating how the coming year's cycle of Sunday lessons— focused upon readings from the Gospel According to Luke— may inform how we hear and heed God's call to discipleship.

Readings from Luke the physician often focus upon Christ's healing acts; how might we be the means of the Lord's healing in our families, in the Church, and in the world God so loves? Luke's telling of the Jesus story often shines a bright light upon the call to be ministers of social justice in the world; how are we being called to do so in this time and place and beyond? The God of all grace intends for the Gospel to be good news for all who are created in the divine image and the world that God formed and declared, "good." Let us embark upon the journey through Advent attentive to Christ's claim upon our lives, that through us the world may know God's love.

Yours in Faith and Hope,

Pastor Sue Sprowls

# O COME, LET US ADORE HIM

*Save the dates for Christmas worship!*

**Longest Night** (a service for grief during the holidays):  
December 21<sup>st</sup> at 5PM, at Our Redeemer L.C. Seaford

**Christmas Eve:** 5:30PM and 8:00PM, at Christ Lutheran

**Christmas Day:** 10:00AM, at St. David's L.C. Mass. Pk.

Our Christmas Eve worship services will be led by Pastor Susan Sprowls. Both services will be uploaded to Facebook and YouTube for those who wish to participate from home.

## THE 2024 CONGREGATIONAL CHRISTMAS CARD

This year, we welcome back our annual tradition of the Congregational Christmas Card. Spare the expense on postage, and send one card with your Christmas wishes for the whole congregation. Your card will be lovingly displayed on our card holder in the Sanctuary for all to read. As in previous years, we ask that those participating kindly send a contribution which we may use to help those in need. **Please send your card and contribution to the Church office by Tuesday, December 17<sup>th</sup>.** Our mailing address is 3384 Island Road, Wantagh, New York 11793. Thank you!

## PARISH REGISTER MEMORIALS

### General Memorial

In Memory of: **Tommy J. Krieger**

*Given by: Claudia & John Gross*

In Memory of: **Otis & Muriel and Charles Weibert**

*Given by: Carol & Jeff Shoemaker*

### Property Improvement & Maintenance

In Memory of: **Jane DiDonato, Daniel Hart,  
and Helga Richert**

*Given by: Jeri Hallgren*

In Memory of: **Jane DiDonato and Helga Richert**

*Given by: Barbara Rath*

Give online today with Vanco! Scan this QR code with your smartphone's camera or visit this link: <https://secure.myvanco.com/L-ZEAF>.



## GOOD NEWS & BLESSINGS

### December Birthdays

- 1: Roxanne Toomey
- 2: Kathy Ackermann
- 2: Lois Fogal
- 3: Lyndsay Mae Franz
- 9: Roger Ohlander
- 10: Keith Biesma
- 10: Gracie Franz
- 18: Makayla Adams
- 25: Pete Bloomfield
- 25: Eileen Colton
- 27: John James Bloomfield



**Would you like to include a birthday or anniversary in the Spire? All are welcome! Please call or email the Church office with the name(s) and date(s). Please do so no later than 30 days before your celebration.**

### Good News

- **Welcome, Pastor!** We are overjoyed to welcome **Pastor Susan Sprowls** to Christ Lutheran Church. Pastor Sprowls has been appointed as our Interim Pastor for a term of two years. We look forward to all of the ways she will help our congregation to flourish. In order to get to know everyone, Pastor Sprowls has asked members to submit a **Welcome Form** to the Church office, which is included in your Spire.

**THE SPIRE • DECEMBER 2024 • VOLUME 716 • A PUBLICATION OF CHRIST LUTHERAN CHURCH**

3384 ISLAND ROAD, WANTAGH, NEW YORK 11793 • (516) 221-3286 • [CHURCH@CLCWANTAGH.ORG](mailto:CHURCH@CLCWANTAGH.ORG)

The Rev. Susan F. Sprowls, Interim Pastor • Roxanne Toomey, Deacon • Nancy Pisani, President

Nicole Nicholson, Director of Music • Kamelija Galijan-Curry, Organist

Dana Antonette, Director, The Christian Nursery School • Della Rao, Parish Administrator/Christian Education Coordinator



- **Thanksgiving Interfaith:** In collaboration with houses of worship around Nassau County, a Thanksgiving Interfaith service will be held on **Sunday, November 24<sup>th</sup> at 3PM** at Congregation Beth Tikvah in Wantagh.
- **Thanksgiving Eve:** In collaboration with Our Redeemer L.C. in Seaford and St. David's L.C. in Massapequa Park, a Thanksgiving Eve worship service will be held here at Christ Lutheran on **Wednesday, November 27<sup>th</sup> at 7PM**. A light reception will follow in Room 2000. All are welcome to attend!
- **Save the Date! Wantagh's 6<sup>th</sup> Annual Winter Wonderland Fair will be held on Saturday, November 30<sup>th</sup> from 12-5PM at the Wantagh Train Museum.** We are once again looking for youth and adult volunteers to participate in this fun event. Please speak with Della Rao if you would like to lend a hand.
- **Condo Raffle:** This year's condo raffle is still open! The winner will be drawn on **Sunday, December 15<sup>th</sup>** during coffee hour. Tickets are \$5 per entry. Thanks as always to **Hans & Laura Vogel** for donating!
- **Country Fair:** Thank you to everyone involved in making this year's Country Fair a great success! We would like to especially thank **BSA Troop 656, Our Retirees, The Fair Committee, Jan Eastlund, and Claudia and John Gross, and all our Fair volunteers** for all of their hard work. We would also especially like to recognize **Regina Coons**, who made over 70 baskets for this year's Fair! Your dedication is commendable.
- **2024-2025 Coffee Hour:** There are **many open Sundays** available to host! We encourage you to consider hosting. As we all benefit from the fellowship Coffee Hour provides, we also benefit from lending a helping hand. Please see Jan Eastlund to volunteer.

## CLC Youth News

- On November 24<sup>th</sup>, **Emily Lynn Boniello** received the gift of Baptism. Congratulations to her and her family!
- **Fall Food Drive:** Thank you to everyone who donated to our annual Fall Food Drive. We would like to especially thank the staff and patients of Dr. Salerno and **Twin Dragon Acupuncture** for collecting on our behalf. Proceeds were sent to St. John's Food Pantry.
- **Scout Cleanup Day** was held on Saturday, November 16<sup>th</sup>. We appreciate the Scouts' continued care for our church.

## COUNCIL HIGHLIGHTS

Due to the November Council meeting being postponed, the November **and** December Council highlights will be

available in the next edition of the Spire. *The Church Council wishes everyone a blessed and Merry Christmas!*

## CHRISTIAN EDUCATION

- Christian Education classes will not be held on **Sunday, December 1<sup>st</sup>** or **Sunday, December 29<sup>th</sup>**. We wish everyone a Happy Thanksgiving and Merry Christmas!

## THRIFT SHOP

Our thrift shop is open on Fridays, 9AM-3PM, and the first Saturday of each month, 10AM-2PM. **The next Thrift Shop Saturday will be held on December 6<sup>th</sup>.**

Please note that the Thrift Shop will be **closed on Friday, November 29<sup>th</sup>** in observance of Thanksgiving. The Thrift Shop will be **open** on every Friday in December, as usual.

Donations are appreciated! For your convenience, a donation shed is available for your use outside of Thrift Shop hours. **Please be sure to place your donations *in the shed, not outside of it, as we cannot guarantee they will be brought inside right away.*** If you are making a sizeable donation (quantity or very large items), please call the Church office ahead of time. **We are not able to accept donations of books, cribs, or mattresses at this time.** If you are unsure of whether we can accept an item, please call the Church office to be connected with a Thrift Shop coordinator. Thank you!

## CHRISTIAN OUTREACH

**Homebound Communion:** Did you know that we offer Communion for the homebound? Due to a temporary illness or injury or a long-term situation, this option is available to you. If you or a loved one is interested in receiving Communion at home or at a care facility, please contact the Church office.

**Altar Flowers:** Weekly deliveries of altar flowers to our shut-ins recently resumed. Thank you to **Jeri Hallgren** for coordinating!

**Mr. Mittens:** Cold weather means that Mr. Mittens is on his way! Please help us to collect warm winter clothing and cozy books for the children at Nassau University Medical Center. **The items we need (new or gently used) are:**

- Children's books
- Hats
- Gloves
- Mittens
- Scarves
- Sweaters
- Monetary donations to purchase needed items (cash or checks made payable to Christ Lutheran Church)

A donation box is located in the narthex. **We would appreciate receiving all donations by Sunday, December 15<sup>th</sup>.** Thank you for your generous contributions!



**Seafarers:** Please see “Thrivent” for details on our annual **Christmas at Sea** collection for Seafarers International.

## THRIVENT FINANCIAL

**Support the Christmas at Sea Program of the Seafarers International House (SIH).** For years, our congregation has supported the ministry of Seafarers International House, which serves mariners from around the world by providing spiritual, emotional, and tangible support. These mariners spend long stretches of time away from family, friends, and community, and sometimes require assistance with their medical needs, lodging, food, counseling, and transportation. The holiday season can be especially lonely far away from home, while at sea or in a foreign land. Every year, our congregation collects items for care satchels to be given to crewmembers of visiting ships by Seafarers’ port chaplains. Please consider donating items from the list below. **Items indicated in bold are especially needed.**

- Sweatshirts, hooded or unhooded (sizes M, L, or XL)
- T-Shirts (sizes M, L, or XL)
- **Knitted winter caps (no pastel colors, please)**
- **Scarves (no pom-poms or fringe, please)**
- **Thermal or gym socks (men’s size)**
- **Snacks (nutrition bars, canned nuts, chocolate bars)**
- Monetary donations (checks made payable to CLC)
- You may also purchase items directly from the Seafarers’ Amazon wish list: <https://a.co/bHHEzEz>.

Monetary donations may be sent to the Church office. All other items may be left in the designated box in the narthex. Volunteers are welcome to help us assemble the care satchels ahead of their **December 16<sup>th</sup>** pickup date. Please speak with Jan Eastlund if you’d like to help. Thank you for helping to bring comfort and joy to essential workers this Christmastime.

## WELCA

**Country Fair... A Big Thank You!** We would like to thank all those who made the Country Fair a huge success:

- **Thrivent**, who gave \$250 in seed money for supplies.
- **Della**, for all of her computer work, mailings for donations, and more.
- **Lilly Ann and Barbara Rath**, who collected an entire year for things for the Christmas and craft booths.
- To those who carried the raffle baskets up to Steinbicker and back down for pick-up.
- To the **Scouts** for going up and down the stairs, up and down the stairs so many times bringing up the merchandise to sell. We are so thankful to you for setting up the tables as well!!!
- To those who spent the week before the Fair setting up their tables with merchandise.
- **Regina**, who made the beautiful 75 baskets for the very popular raffle booth.

- To all those who sold the raffle tickets and To the Grand Dame of Wantagh, **Ruth Kollar**, who believe it or not at age 100, climbed the flights of stairs to get back to her position selling raffles this year!!!
- To the various businesses who donated gift cards for the raffles and of course, the TV!
- To **Hans** for donating a week at his Orlando condo for a special raffle. **Tickets are still available.**
- To all those who made cookies for the cookie walk, to **Jan** for organizing, to **Lilly Ann** for the Scandinavian Almond cakes and to **Doris** for her fabulous jars of pickles.
- To **Claudia and John** who operated the café to perfection as usual!!
- To all those who worked the booths. A special thank you to **Dee Bloomfield’s granddaughters Mary and Abby** for their help at the craft table!
- To **Barbara Stone** who handled the money boxes and receipts.
- To all those who came, purchased and supported the fair.

If I missed someone, I’m sorry. You’re the unsung hero. It takes a congregation to pull this off. Thank you!! - *Lilly Ann, Barbara, Regina, Kirsten*

The next WELCA meeting will be held on **Wednesday, December 4<sup>th</sup> at 1PM in Room 2000.** We will be having our Christmas Program. All ladies are welcome to join us. **WELCA wishes everyone a very Merry Christmas!**

## FROM THE KNITWITS...

There is so much warmth being delivered to so many. The hats, blankets, scarves, baby sets, lap robes, and bibs of every size left from the fair are being delivered to Nassau University Medical Center (rehab, pediatrics, and neonatal units), Hewlett House (One in Nine), Belair Rehab, the NYU Langone (Winthrop) Chemotherapy Unit, Sunrise Assisted Living, and our Seafarers collection. Many, many thanks to all those who throughout the year have kept their fingers busy creating all this warmth we give. To those who would like to help in this endeavor, please contact me.

- *Lilly Ann Munnich, 516-826-3663*

## ST. JOHN’S FOOD PANTRY

Your donations are appreciated. Thank you!

Canned Stew - Chef Boyardee - Chili with Beans - Coffee  
Cookies - Cooking Oil - Crackers - Egg Noodles  
Evaporated Milk - Instant Mashed Potatoes - Juice  
Pancake Mix & Syrup - Peanut Butter  
Pasta (Penne/Spaghetti) & Sauce - Pork & Beans - Rice  
Salad Dressing - Spam - Tuna Helper

Please check the expiration dates on packaged foods before donating.



## ARE YOU AN ACTIVE MEMBER?

What does it mean to be an active church member? The Constitution and By-Laws of Christ Lutheran Church define an **active member** as one who, *during the last three years (not including the present year)*, has done **both of** the following:

- “Communed in this congregation or received Communion from Christ Lutheran Church’s Pastor(s);
- “Made a contribution of record to this congregation.”

### Please fill out a Communion Card at least once a year.

These cream-colored cards are kept in the church pews. You can place your completed card in the offering basket during worship service, or hand it to an usher. **Please also be sure that your monetary contributions are being recorded.** If you do not know your envelope number, or are not sure if you have one, please call the Church office. Any additional questions or concerns can be addressed directly with our Treasurer, Barbara Stone. Thank you for being a part of our church community!

## THE 2025 ANNUAL MEETING

**Save the date!** The 2025 Annual Meeting will be held after 9AM worship service on **Sunday, January 26<sup>th</sup>**. Church committees and organizations are encouraged to begin compiling their 2024 Annual Reports **now**. Please speak with a Council member if you have any questions. Annual Reports **must** be submitted to the Church office by **Friday, January 17<sup>th</sup>**. Reports are required from the following:

- |  |
|--|
| Building/Property - Christian Education - Evangelism |
| Fellowship - Finance - Fundraising - Nursery Board   |
| Outreach - Pastor/Parish Relations - Personnel       |
| Social Media - Stewardship - Thrift Shop             |
| Transition - Worship & Music - Youth - WELCA         |
| Altar Guild - Counters                               |

In order to hold the Annual Meeting, a minimum of **ten percent** of the Church membership must be in attendance. Christian Ed. classes will not be held on this day. Please do all you can to be available. ***The future of Christ Lutheran depends upon decisions made here!*** This constitutes the **second official notice of the 2025 Annual Meeting.**

## THANK YOU TO...

Dear Christ Lutheran Church,  
With heartfelt gratitude, I thank you for your generous donation to **National Ovarian Cancer Coalition**. Your gift of **\$510** ensures that NOCC can continue to serve our teal community from coast to coast through critical

programming and support services. You are making a meaningful impact, from increasing early awareness about the disease to providing resources for survivors and their families, from bringing the community together through hope and support, to funding life-saving research. At NOCC, we believe in a 360-approach to patient care. Our goal is to support survivors and caregivers no matter where they are on their ovarian cancer journey with services like meal delivery, financial assistance, digestible education about an ovarian cancer diagnosis, and so much more. We know this disease can be isolating and overwhelming. Still, with the help of supporters like you, we can ensure no one goes through this journey alone, offering the resources, programs, and community connections that make a difference in the lives of those affected by ovarian cancer. We are so very thankful for your dedication to our cause and for bringing us one step closer to a cure. As our anthem reads, “Together we are strong, and we will never back down!” - *Sincerely, Melissa Aucoin, CEO*



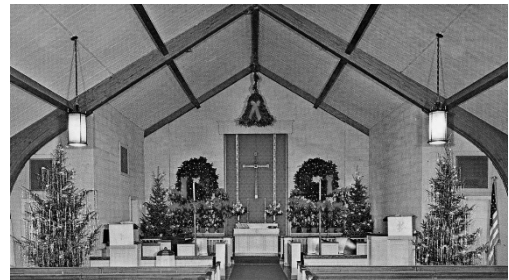
## PRAYER LIST

*We Remember Especially...*

- Kathleen Cardone - Becky Carlson - James Cathcart
- Danielle Chillemi - Sal Costanzo - Sue Costanzo
- Joan Drake - Travis Gentile - Betty Gibberman
- Bill Gilmor - Emmy Grenzig - Barbara Grieser
- Theresa Heenan - Arnold Howard - Steven Koch
- Laura Koenig - Ruth Kollar - Susan Kremer - Jean Leib
- Chris Mantay - Norma Mantay - Janet McShea
- William McShea - Marilyn Miller - Lilly Ann Munnich
- John Nittoli - James Pallas - Jim Pawl - Barbara Proce
- Gary Proce - Catherine Rao - Terri Rao - Emmett Reilly
- Rose Reilly - Ann Reimer - Barbara Reimer
- Della Dorn Rice - Kay Riese - Doris Spiegle
- Natalie Stone - James Toomey - Hilde Uccellini
- Nancy Valenti - Liz Wagner

**REMINDER:** To add a name to our prayer list, please contact the Church office. Names remain on the list for **six weeks** per request, unless specified that it is a long-term request. Please be sure to apprise the Church office of any updates or changes.

## CLC HISTORY



*A “Christmas Past” at Christ Lutheran Church, 1963.*

# THE TWELVE PRAYERS OF CHRISTMAS

This season, you may find yourself humming along to a fan-favorite tune, “The Twelve Days of Christmas.” But did you know that this Christmas Carol is actually a prayer?

Dating back hundreds of years, “Twelve Days” was originally a poem used by Christian clerics to celebrate Twelve-Tide, the dozen days of Christmas. Each day’s “gift” was a symbol for different holy gifts. During the Middle Ages, when most people could not read, hearing the poem helped families to learn about the Christmas season. The poem is recorded as being printed for the first time in England in the year 1780. The poem was then set to music in 1909, and the rest... is history!

As you read on about the true meaning of this song, let us reflect on the true meaning of Christmas... and thank the Lord for our most special gift, His Son, Jesus Christ.

*On the \_\_\_\_ Day of Christmas, My God gave to me...*

## 1. A Partridge in a Pear Tree

The partridge symbolizes Jesus, whose birthday is the first day of Christmas. The partridge in the song is actually female, because mother partridges are the only species of bird that will sacrifice themselves to protect their children.

## 2. Two Turtledoves

The dove is a symbol for the Christian faith, because it’s the bird of peace. The two turtledoves represent the Old and New Testaments, the story of our faith.

## 3. Three French Hens

Have you ever heard that French is the language of love? Well, here, that’s not far off! This gift represents the Apostle Paul’s First Letter to the Corinthians, where he writes about **faith, hope, and love**. As Paul reminds us, “the greatest of these is love.”

## 4. Four Calling Birds

The four calling birds are Matthew, Mark, Luke, and John, the writers of the Gospels. The word “gospel” means **good news**, called out to all of God’s people.

## 5. FIIIVE GOOOOLLDEN RIIIIINGSSSS!

The five gold rings symbolize the first five books of the Old Testament. In Hebrew, and in the Jewish religion, these books are called the Torah or the Pentateuch.

## 6. Six Geese a-Laying

The six eggs laid by the geese represent the six days of Creation. On the seventh day, God rested... and so did the geese.

## 7. Seven Swans a-Swimming

Swans are symbols of beauty. So, the seven swans are naturally the seven beautiful gifts of the Holy Spirit: Fear of the Lord, Wisdom, Knowledge, Counsel, Fortitude, Understanding, and Piety.

## 8. Eight Maids a-Milking

In feudal England, being a milkmaid was considered the lowest-level job. It was primarily very poor women who did this work... and back then, being those two things meant you were easily overlooked. So, this gift reminds us that Jesus dearly loves and blesses those who feel alone: the poor in spirit, the mourners, the meek, those who hunger and thirst for righteousness, the merciful, the pure in heart, the peacemakers, and the persecuted.

## 9. Nine Ladies Dancing

The nine ladies represent the nine fruits of the Holy Spirit: love, peace, joy, patience, kindness, generosity, faithfulness, gentleness, and self-control.

## 10. Ten Lords a-Leaping

In feudal England, being a lord meant you were in charge of upholding justice in the land. So, the ten lords are code for the Ten Commandments, the laws all Christians follow.

## 11. Eleven Pipers Piping

The eleven pipers represent Jesus’ eleven Disciples. Remember, Judas is not included here because he betrayed Jesus.

## 12. Twelve Drummers Drumming

The twelve drummers represent the twelve points of the Apostles’ Creed. Each beat *drums at* a different part of the Christian faith that we profess. While different denominations say different versions of the Creed, its core points are the same.

# Merry Christmas!



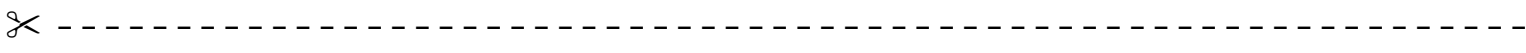


# Christmas Flower Memorials

"For to us a child is born, to us a son is given... And he will be called Wonderful Counselor, Mighty God, Everlasting Father, Prince of Peace."  
- Isaiah 9:6

Dear Friends,

The Season of Advent is upon us. Soon, it will be time to decorate our Sanctuary with trees, wreaths, garland, and poinsettias as we prepare to celebrate Christmas. This year, we will continue our tradition of honoring our loved ones with Christmas flower memorials. These memorial gifts will be displayed in the narthex and listed in our Christmas bulletin. The suggested contribution is **\$15 per memorial**. If you wish to participate, please complete the form below and return it to the Church office with your donation **no later than Wednesday, December 18**.



## Christ Lutheran Church Christmas Flower Memorials

I am enclosing \$\_\_\_\_\_ for a Christmas flower memorial.

Number of Memorials Requested: \_\_\_\_\_

Please indicate:  Cash  Check Please make all checks out to Christ Lutheran Church.

Envelope # \_\_\_\_\_ Phone Number: \_\_\_\_\_

Given by: \_\_\_\_\_

**Please print your name exactly as you wish for it to appear in the bulletin.**

I wish to give this memorial (select all that apply- please number if they are separate memorials):

In Thanksgiving to God.

In Honor Of: \_\_\_\_\_

In Memory Of: \_\_\_\_\_



**Please return this form with your contribution no later than Wednesday, December 18.**

3384 Island Road, Wantagh, New York 11793



## **Household Info for the New Rector**

Welcome to Christ Lutheran Church! We are glad you're here and look forward to getting to know you. Here are a few things to help you get acquainted with us. We hope you'll find this information useful.

Here's a photo to get you started:

**Pictured (describe):**

**Here's a brief description of our household...**

*(please turn over)*



**It's important that you know (explain whatever you wish; please be specific)...**

**A fun fact or two (or three) you might enjoy knowing...**

# PROPERTY REPORT – DEC 2024

**Our Volunteer Retiree Group** continues to perform the maintenance and/or improvement items from the “**Office**” **To-Do list**, Seasonal activities, or things reported to us, and we can accomplish without professional help.

Our **recent activities** have included:

- We continue to move many items for the Thrift shop; Book fairies, Yard Waste, Carmine Bags, Room 2000 racks/tables, garbage bags, NS Toys, repairs, etc.
- **We thank Bill** for his Ivy removal and shrubbery trimming efforts.
- We organized the “**Tool Time**” table material in preparation for the Fair. We set up the table and handled the coverage during the Fair. We also assisted in setting up additional tables and Chairs and the road signs for the Fair, and the breakdown.
- After changing a “**Hands-free faucet**” in the main floor ladies bathroom with a bad “**sensor**”, we contacted the manufacturer in China and they sent us a replacement sensor for our “Spare” unit.
- We cut and tied up a big fallen branch on the side lawn and moved it to the curb.
- We trimmed the rear yard fence of the overhanging tree growth.
- We repaired a jammed rear altar banner pulley, restoring the proper function.
- We repaired a broken table leg bracket in the Gym.
- We changed a slow fill valve in the Room 100 Men’s room.
- We placed a protector around a sprinkler head in the Parsonage yard, Zn5.
- We winterized and stored the outside hoses.
- We activated both Heating Plants and changed 6-thermostat batteries.
- We reset a loose ceiling tile and tightened the TP holder in the Gym Bathroom.
- We tightened two stair railings in the North Ed Building staircase.
- We Surveyed and advised on the unfinished Parsonage Laundry area. We contacted Quinn for the Water and Gene and Vinny handled drilling the Vent pipe hole and installing the Vent, ready for the appliance deliveries.
- We activated the Parsonage Heat and Water Heater.
- We repaired the two Parsonage Chain Link Gates to close properly.
- We removed the water stains from the Gym Bathroom bowl.
- We activated and de-activated “Mr. Mittens”.
- We removed the NS office A/C unit to storage in room 100 and repaired and replaced the Screen.
- We changed the Time on all the “Telephones”, “Wall Clocks”, and Outside lights.
- Repaired a sharp edge on a PlayYard item.
- Deactivated and cleaned the filters on the three De-Humidifiers.
- Winterized the Room 10 Exhaust fan and activated the understairs heat lamps.
- De-frosted the Room 2000 refrigerator.
- Re-Aligned the Flagpole lanyard after the winds caused the flag to jam the shackel.

Retirees

## NEED RESEARCH FOR POTENTIAL LONG RANGE PROJECTS

- \* Research the possibility of **new lighting for the Sanctuary.**
- \* Research a possible refurbish of the Education Building Main Floor Bathrooms.
- \* Research a possible refurbish of the two Room 10 Bathrooms.
- \* Research replacing the rear yard Stairway cover. (**Scout Project??**)
- \* Research the possibility and costs to remove and **refurbish the Original Steeple Bell and Cradle.**
- \* Investigate **installing a Power Pole** in the far Parking lot area, for **Security.**
- \* Research **replacing the Parsonage rear fencing.** (Research who is the owner?)

## MISCELLANEOUS THINGS STILL NEEDING WORK

- \* Paint the Sliding Closet doors in the Gym South access area.
- \* Repair numerous **Cement issues.** (Walks, Pit wall, Pointing, Washes)
- \* Investigate and strengthen the **Altar screen Filigree panels** which are **showing signs of looseness and cracking.**
- \* Check for **loose stair treads** on the Room 10 and 20 stairways and re-glue.
- \* **Arrange to grow grass on the East side of Steinbicker.** Stones to pit? Topsoil?, Sod?, Labor. Extend the Sprinkler system into to the area.
- \* Rebuild, once again, the weathered and rotting Front Sanctuary Planter Boxes. (Scout Project??)
- \* Complete the Painting of the Thrift Shop incoming shed.
- \* Engineer a “Safety” arrangement for the heavy Organ Speaker loft “Hatch cover”.
- \* Activate, charge, and stage the new “Power Shovel”.
- \* Touch-up the rust areas of the 10/20 Fire Escape.
- \* Check the remote batteries and filters on the office A/C units.
- \* Repair and install the screen in the NS director’s office.
- \* Repair two Gym tables with damaged legs.
- \* Install the ELCA Tree lights in warm weather.

## ADVENT/CHRISTMAS 2024 LITURGICAL CALENDAR

2024 WORSHIP DATES	USHERS	ALTAR GUILD	COUNTERS	ACOLYTE	COMM. ASST.	COFFEE HOUR HOST(S)
Wed, November 27, 2024 THANKSGIVING EVE 7:00PM Service (Green)	John Gross	ALL GROUPS		M. Murphy	Barbara Stone	N/A
Sun, December 1, 2024 First Sunday of Advent 9:00AM Service (Blue)	Robert Ahearn Roger Ohlander	D. Ohlander's Group	J. Fahey B. Henderson D. Ohlander R. Ohlander	N/A	Barbara Stone	The Franz and Ohlander Families
Sun, December 8, 2024 Second Sunday of Advent 9:00AM Service (Blue)	John Gross Craig Sparke	B. Rath's Group	R. Ahearn J. Gross H. Vogel	J. Kemnath	Hans Vogel	The Kemnath Family
Sun, December 15, 2024 Third Sunday of Advent 9:00AM Service (Blue)	Robert Ahearn Roger Ohlander	E. Colton/L.A. Munnich's Group	D. Ohlander R. Ohlander B. Rath G. Veltti	M. Murphy	Nancy Pisani	Volunteers Needed!
Sun, December 22, 2024 Fourth Sunday of Advent 9:00AM Service (Blue)	John Gross Craig Sparke	D. Ohlander's Group	J. Eastlund J. Eastlund J. Fitzgerald	J. Kemnath	Elaine DiChiara	Volunteers Needed!
Tues, December 24, 2024 CHRISTMAS EVE – 5:30PM SERVICE (White)	Robert Ahearn Roger Ohlander	ALL GROUPS		M. Murphy	<u>Open</u>	N/A
Tues, December 24, 2024 CHRISTMAS EVE – 8:00PM SERVICE (White)	<u>Open</u>	ALL GROUPS		<u>Open</u>	Barbara Stone	N/A

NEW WORSHIP ASSISTANTS ARE ALWAYS WELCOME! NO PRIOR EXPERIENCE IS NECESSARY. CONTACT THE CHURCH OFFICE TO LEARN MORE.  
CURRENT WORSHIP ASSISTANTS SHOULD CONTACT THE CHURCH OFFICE IF THEY NEED TO MAKE A CHANGE TO THEIR ASSIGNMENT. IF YOU WOULD  
LIKE TO VOLUNTEER TO HOST A COFFEE HOUR, PLEASE CALL JAN EASTLUND AT 516-781-0491.





# Nursery School News: December 2024

The bounty of Thanksgiving was all around us this November in the Nursery School. In November, all the children at the Nursery School are learning that we should be thankful for the wonderful things God has given us. They are all learning about the first Thanksgiving and why we celebrate this special holiday. The children are discussing the importance of family, what it means to be thankful and what they are thankful for.

The 2-year-old classes are learning about the color brown for November. They have been enjoying themselves making all kinds of leaf, scarecrow, turkey and Fall crafts. They have been having a great time learning about what November brings, the color Brown, the number two and the shape of the month, a square.

The three-year-old classes have been working hard on their thankful books, *Thank You God for All Your Wonderful Gifts*. Each child gets a page to show all of their family and friends. It is such an enjoyable activity for everyone. The children have been very busy making crafts to decorate the classrooms and their homes. Beautiful Indian corn, colorful turkeys and funny scarecrows can be found all over the walls.

The four-year-old class is getting ready for their annual Thanksgiving Feast. The children bring in all kinds of goodies, pumpkin bread and corn muffins to enjoy with one another. To show how thankful they are to have such a wonderful family, they are making beautiful Thanksgiving keepsakes for their parents. The children can't wait to share with their parents the Thanksgiving Cookbook they created as a class that is filled with their "expertise" on how to cook a turkey! To end the celebration, the children entertain their parents with a song at pickup, dressed up in Thanksgiving hats they made themselves.

All of the children in the 3- and 4-year-old classes put on a quick performance with a little singing and dancing of their Thanksgiving songs that they have been so busy practicing.

The children had tons of fun this fall, and are ready for the Christmas Season to begin. December will continue with the children learning the true meaning of Christmas. The four-year-old class will be getting ready to perform at their annual Christmas pageant right before the Christmas break. All the children in the Nursery School will be making homemade Christmas gifts for their families to enjoy. Each class will be celebrating with a class party and rumor has it, Santa will be making an appearance if we are on the nice list! We look forward to the spirit of Christmas and holiday joy filling our hallways.

**Christ Lutheran Church**

3384 Island Road  
Wantagh, NY 11793  
Church (516) 221-3286  
Nursery School (516) 679-8425  
www.CLCWantagh.org

Non-Profit Org.  
U. S. Postage  
**PAID**  
Wantagh, NY  
Permit No. 27

*Electronic Service Requested*

\*\*CONTAINS TIME SENSITIVE MATERIAL\*\*

# December 2024

If you do not wish to receive this mailing,  
Please return this sheet to the address above.

## Coming in December...

December 1<sup>st</sup>: Welcome, Pastor Sprowls! No Christian Education

December 4<sup>th</sup>: WELCA Meeting, 1PM, Room 2000

December 5<sup>th</sup>: Finance Meeting, Time TBD

December 7<sup>th</sup>: Thrift Shop Saturday, 10AM-2PM

December 9<sup>th</sup>: W&M/Council Meeting, 7PM, Room 2000

December 11<sup>th</sup>: January Spire Submission Deadline

December 12<sup>th</sup>: SJF Cancer Support Group, 10AM, Room 11 School Building

December 21<sup>st</sup>: Longest Night Service, 5PM, Our Redeemer

December 24<sup>th</sup>: Christmas Eve, 5:30PM & 8:00PM Worship Services

December 25<sup>th</sup>: Merry Christmas! 10AM Service at St. David's

December 29<sup>th</sup>: No Christian Education

